

## BARTON WAY, CROXLEY GREEN. WW2 AIR RAID SHELTER

How we first saw it in the back garden in 2007



You could just see it from the upstairs window



The view after we cleared the shubbery



Closer



The asbestos air vents and soil supporting wall were uncovered when we started to remove the soil.

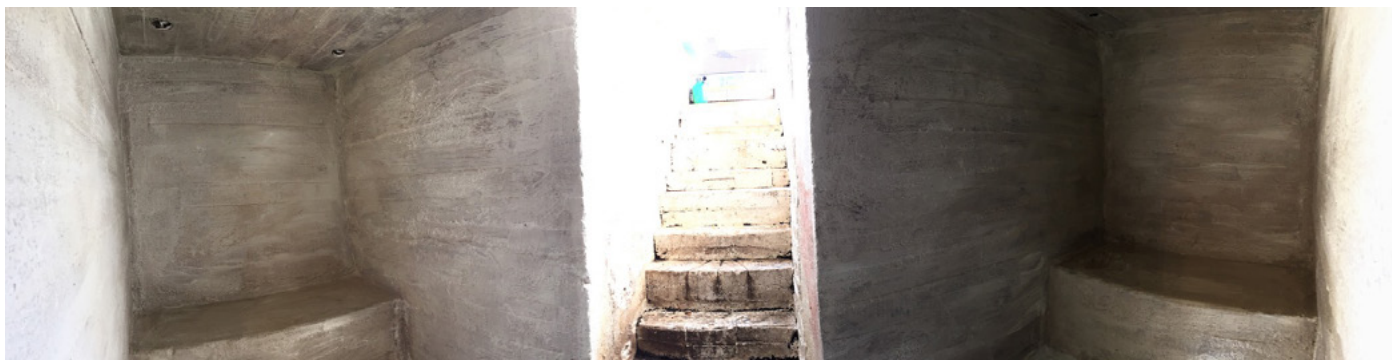


An old metal tar tin and other bits were found while digging. At this point we found two coins between two bricks. One from 1915 and one from 1939.



Inside seating

Panorama of inside (after using tanking solution on the walls to stop moisture)

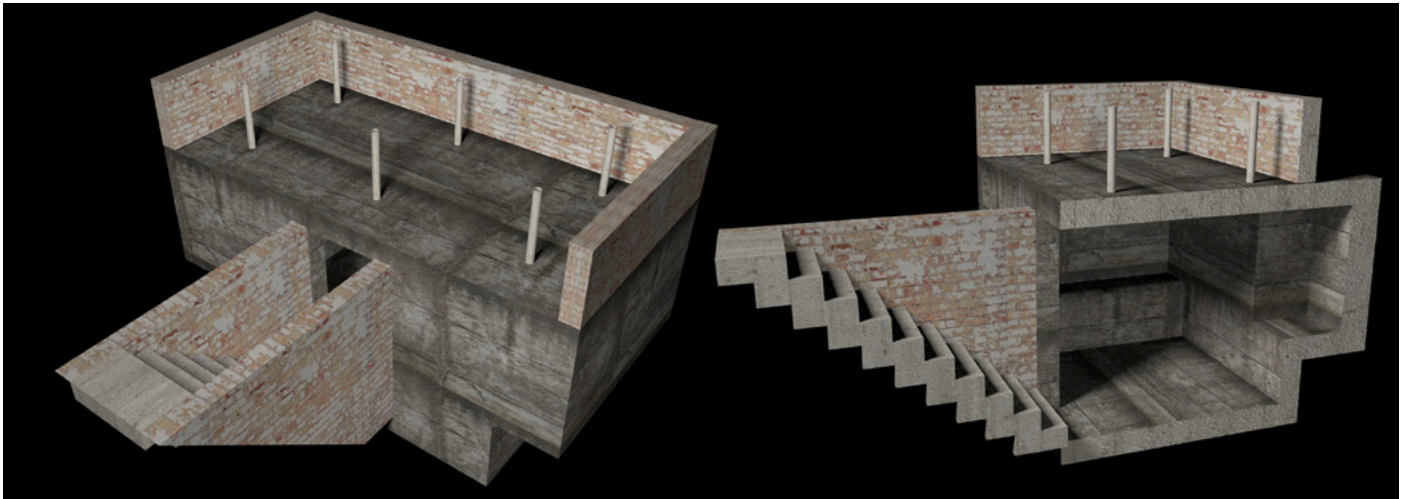


After we decked-over the whole thing.

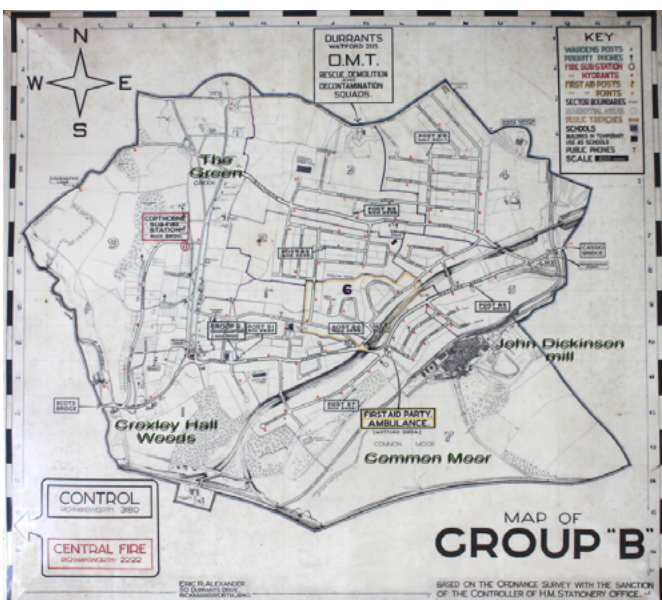


Door-lift gas struts fitted (like a car boot) and sign added! You can see in the top photo the cut-out where the door is.

I re-built the shelter in 3D (my job is in TV) so you can see the cut-away inside. The shelter has a drain so it never floods.



A Google maps image of the field behind our houses and a close-up of a WW2 Home Defense map of the area. The brown shape below & to the left of the number '6' indicates the public bomb shelters in the field. These are now filled-in and lie below the playing area which was built around 8 years ago.



This is the whole map.

This webpage has more local info:

<https://www.croxleygreenhistory.co.uk/second-world-war-1939-1945.html>